

INVEST HEALTH

Strategies for Healthier Cities

A Project of the *Robert Wood Johnson Foundation*
and *Reinvestment Fund*



Invest Health Web-Based Learning Webinar

COMMUNITY ENGAGEMENT

August 15, 2016

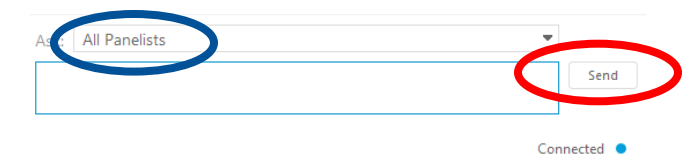
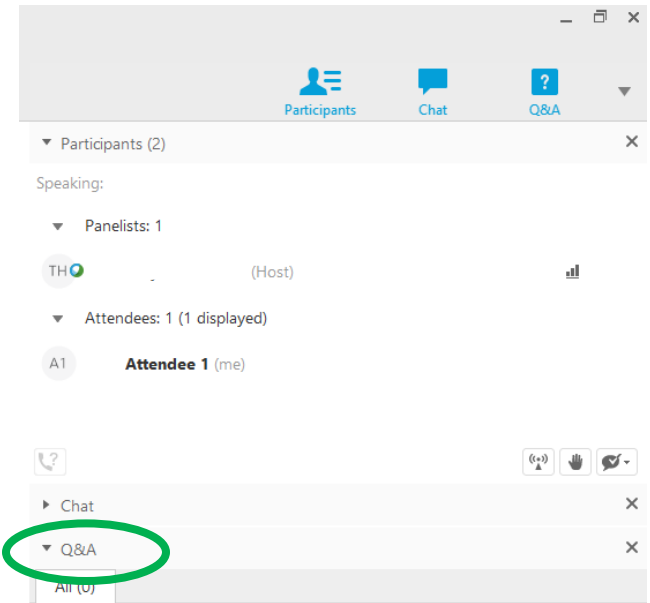
Technical difficulties? Call **1-866-229-3239**

For Technical Assistance

If you have technical difficulties, call WebEx support at **1-866-229-3239** for assistance.

You may also submit questions using the **Q&A** feature on the right hand side of your screen. (Chat is disabled.)

- Please choose **All Panelists** from the “Send to” menu.
- Type your question and click **send**.



Desired Outcomes

- Gain knowledge regarding community engagement to include:
 - Authentic engagement
 - Purposeful engagement
 - How to engage community as a partner in the work
 - Institutional collaboration versus community engagement

Agenda

1. Introduction (Karya Lustig)
2. Community Engagement (David Liners)
3. Discussion (All, Facilitated By Karya Lustig)
4. Closing (Karya Lustig)



DIAL IN

David Liners

David Liners is the Executive Director of WISDOM, a Wisconsin network of over 150 faith based organizations, part of the international Gamaliel Foundation, for which he has worked as an organizer and trainer since March of 1997. Under his leadership, the statewide network has grown from three to eleven diverse, interfaith organizations in Wisconsin. He helps develop new models and strategies for a variety of projects. He has served as the Lead Organizer of MICAHA (Milwaukee Innerscity Congregations Allied for Hope). Prior to his work with MICAHA and WISDOM, Dr. Liners worked for 15 years in communities on Chicago's south side. He holds a B.A. in Political Science from Marquette University in Milwaukee, a Masters of Divinity from the Catholic Theological Union in Chicago, and a Doctor of Ministry from St. Mary of the Lake University in Mundelein, IL. He is fluent in Spanish and English and has published several articles in each language on themes of community organizing. He lives in Milwaukee, Wisconsin.

Community Engagement

David Liners –
david.liners1@gmail.com



Milwaukee Kenosha Racine Waukesha Fox Valley Green Bay Wausau Eau Claire Madison Manitowoc Beloit
MICAH CUSH RIC SOPHIA ESTHER JOSHUA NAOMI JONAH MOSES RUTH JOB

Gamaliel in Wisconsin

Three Primary Aims of Congregation-based Organizing

1. Build stronger, more diverse
communities

2. Build capacity for positive change

3. Build leadership capacity

Community-building

- *Systematic one-on-one conversations*
- *Community based on “self-interest”*
 - *Addressing some barriers to community-building*

Building Capacity (aka “*Power*”)

- Power = “The ability to act.”
- Power= Organized people + organized money
- Power = Capacity to demand justice rather than plead for charity.

Build Leadership Capacity

- “Iron Rule of Organizing” = *Never do for others what they can do for themselves.*
- Movement from victim and/or bystander to active participant in the public arena.
(*“Stop whining; start organizing!”*)
- Community engagement is NOT networking

Questions:

- How much time and energy is spent listening to the “target” community, without an agenda?
- Are you “recruiting” or “organizing?” (How much room is there for people to shape the agenda?)
- Who is being empowered by this work? (Not: what is the policy result we are looking for).

EXAMPLE – EXPO (EX-Prisoners Organizing)

- Organization of, by and for formerly-incarcerated people**
- At the center of the ROC Wisconsin campaign for criminal justice reform.**

INVEST HEALTH

Strategies for Healthier Cities

A Project of the *Robert Wood Johnson Foundation*
and *Reinvestment Fund*

DISCUSSION

Dial-in Instructions

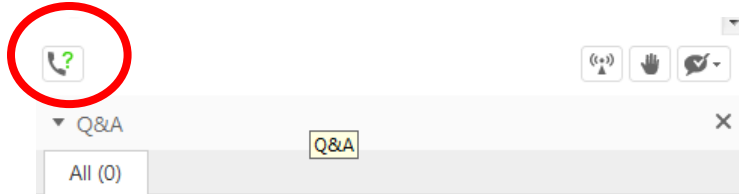


Figure 1. Audio conference request

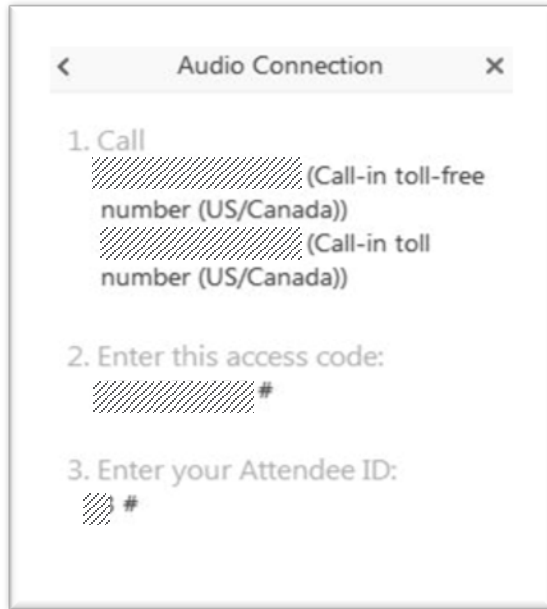


Figure 2. Three-Step Dial Information

Please see the instructions below to **link your online presence with the teleconference.**

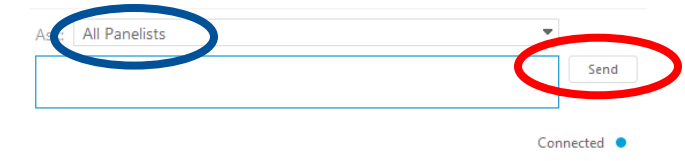
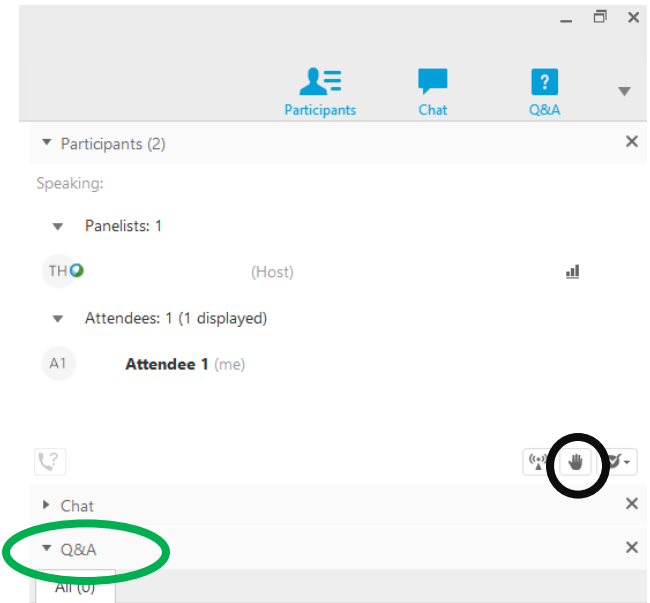
1. Click on the phone icon with the question mark at the bottom of the Participants panel to request to dial in. (See red circle in Figure 1.)
2. Choose “I will call in” from the pop-up dialogue box.
3. Then, use the **three-step** dial-in information (Figure 2) to join the teleconference. You should then see a phone icon (📞) next to your name.
4. Please mute the audio on your computer to avoid interference.

Questions?

If you have a question, please

- **raise your hand** to be called on (and unmuted); or
- write to us using **Q&A**.

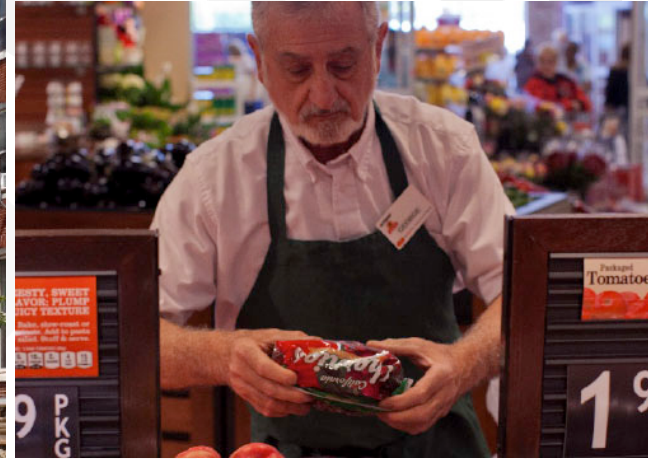
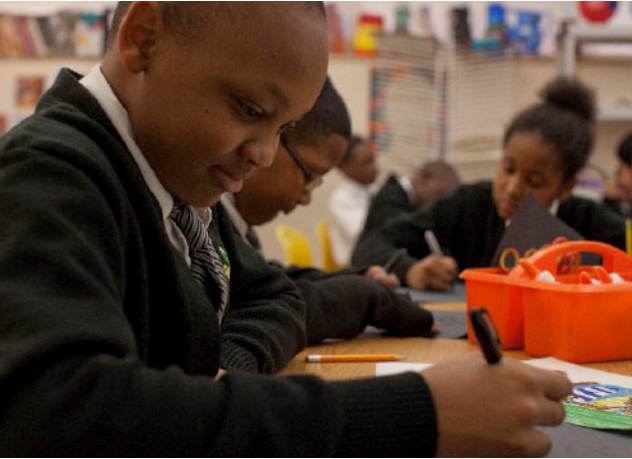
Please send written questions to **All Panelists** and hit **send**.



INVEST HEALTH

Strategies for Healthier Cities

A Project of the *Robert Wood Johnson Foundation*
and *Reinvestment Fund*



Thank You!
